

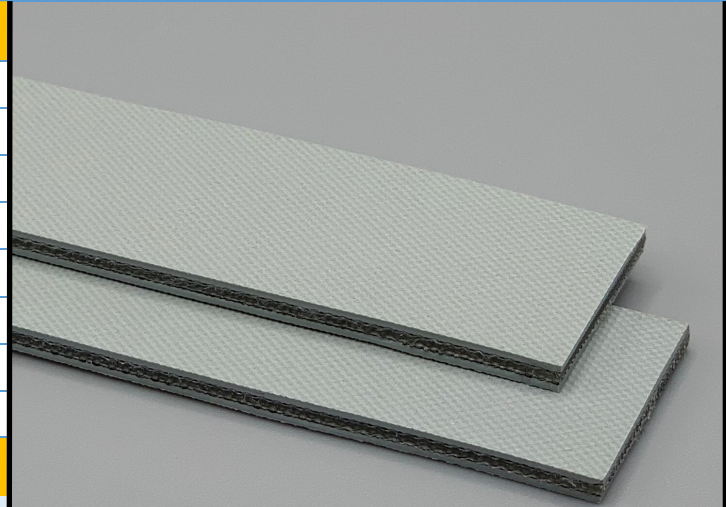
351100

BF 30P Gray

PT

Material Construction

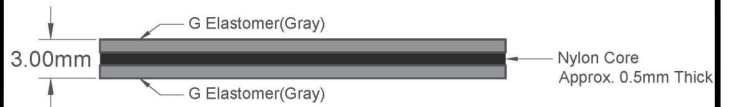
Conveying Surface	Material	G Elastomer
	Profile	Normal Texture
	Color	Gray
Tension Member	Material	Nylon
	Plies	1
Underside	Material	G Elastomer
	Profile	Normal Texture
	Color	Gray



Technical Specifications

Overall thickness	3.00 mm	0.118 in.
Weight	3.30 kg/m ²	0.68 lbf/ft ²
Maximum width	508 mm	20 in.
Minimum pulley/Back flex	30 mm	1.181 in.
Diameter for recommended endless splice		
Shaft Load FW at 1% Elongation & 180° Arc of Contact	10 N/mm	57.10 lbs./in.
Load for 1% Extension	5 N/mm	28.55 lbs./in.
Maximum Tensile Load	250 N/mm belt width	
Standard tension	1.5-3%	
Operational temperature range	-20/80°C	-4/176°F

Material Build



Features

FDA	NO	Anti-Static	YES
USDA Meat and Poultry	NO	Flame Retardant	NO
USDA Dairy	NO	Cross Rigid	YES
Anti-Microbial	NO		

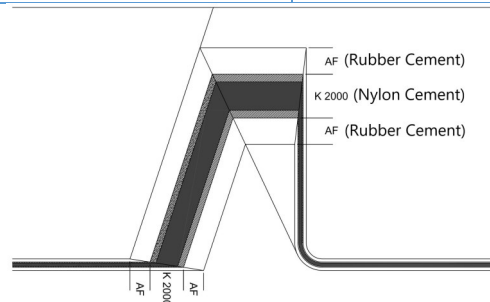
Splicing Instructions

Standard Nylon Core Press Settings

Pressure (psi)	Temperature		Press Time	90° Grinding Length	60° Grinding Length
	Top	Bottom			
30	110°C 230°F	110°C 230°F	25 min	2.625"	3"
K2000 Adhesive on Polyamide Surface AF Adhesive for elastomer G (Rubber)				Silicone Release on top and bottom	

Standard Splices

Endless	Skived
Clipper Lace	Not Recommended
Staple Lace	Not Recommended



*These settings are a guideline only, every press is different. Test splicing is recommended.

*Minimum pulley diameters can vary when mechanical lace is installed. Contact our technical team for any fabrication or application questions.

Notes

Storage at normal temperature conditions of 23°C/73°F - 50% humidity recommended. Changes in the dimensions possible when conditions do not apply.
Good damping properties.

*Minimum pulley diameters can vary when mechanical lace is installed. Contact our technical team for any fabrication or application questions.

